

THE VENETIAN COLLECTION

A dramatic two story foyer with elegant curved stair opens to living and dining rooms.

Two story family room complemented with a fireplace is perfect for entertaining.

Generous kitchen is complete with large breakfast bar, walk in pantry, and adjoins to sunny breakfast area with curved window wall and entrance to patio.

Distinguished master bedroom suite includes a ten foot tray ceiling, king sized walk in closet, and an impressive master bath with glass enclosed shower and Jacuzzi® tub.

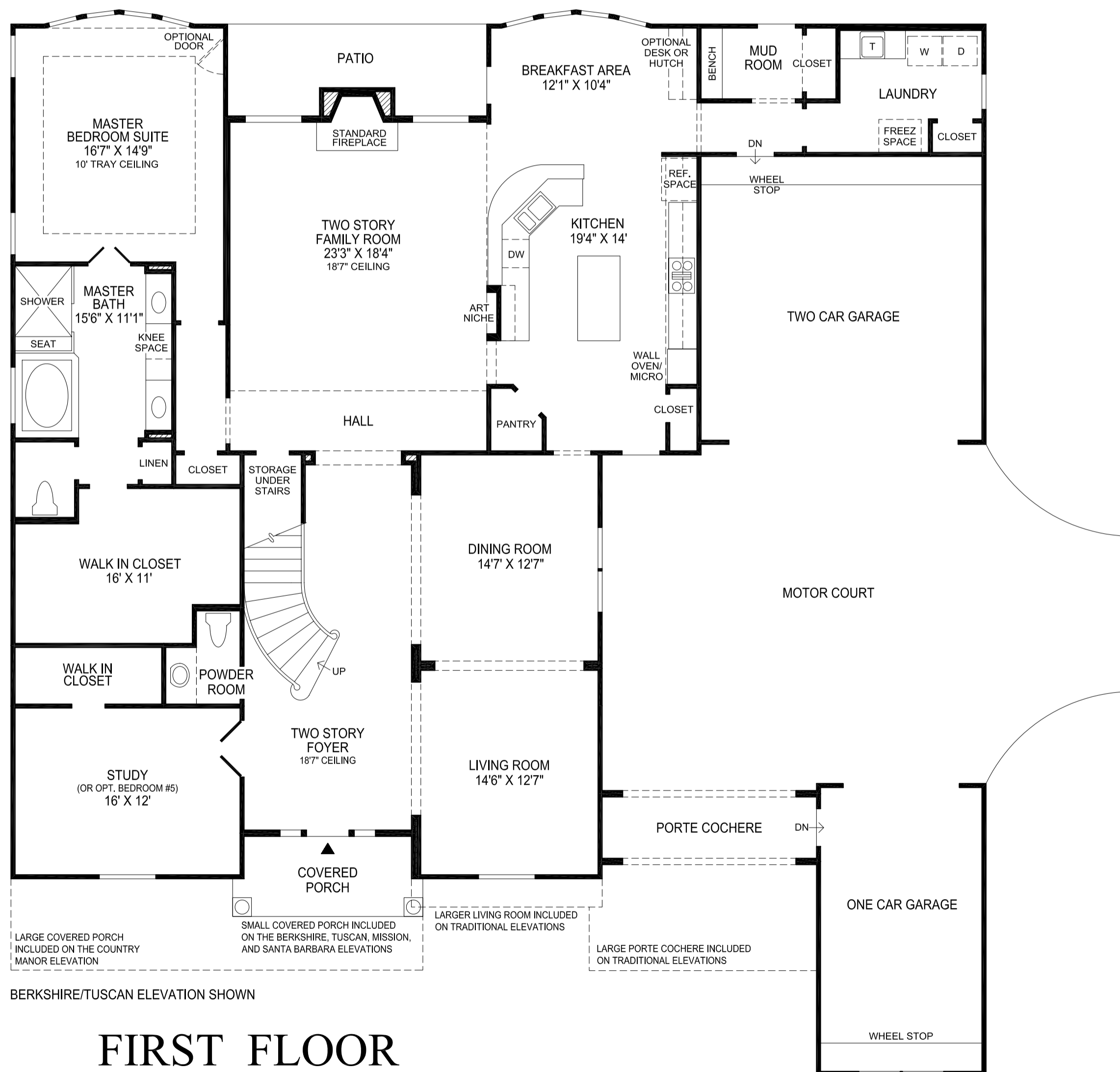
Full study with walk in closet and double door entry.

Second floor features a spacious game room, resource center, and multiple overlooks.

All bedrooms offer a walk in closet.

Porte cochere garage with motor court is standard on all elevations.

4 bedrooms, 3 1/2 baths.



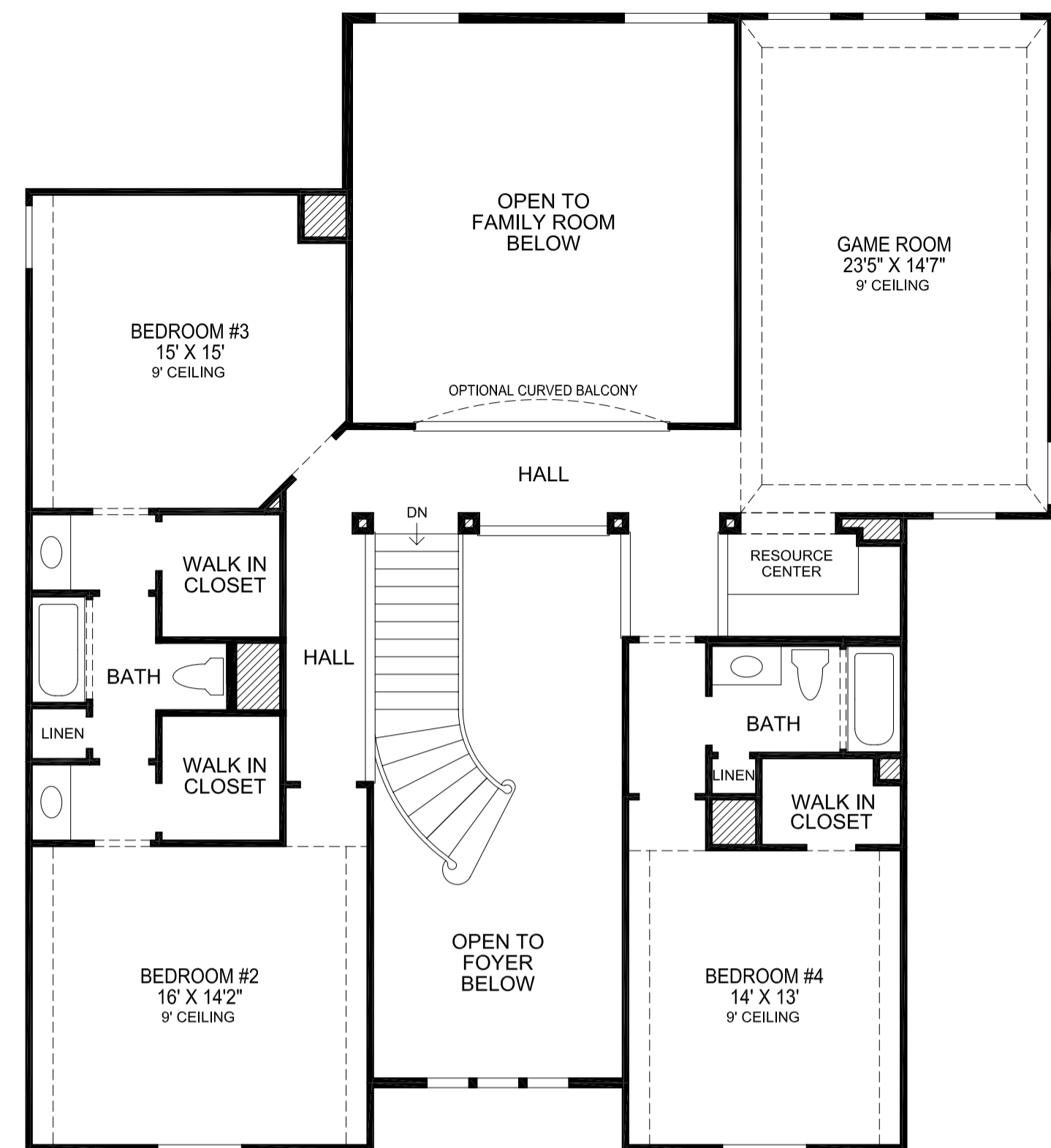
FIRST FLOOR

All room dimensions are approximate, shown to the maximum dimensions of each room, and are subject to field variation. Dimensions should not be used to calculate room square footage. Some windows, exterior features, and floor plans may vary with elevations. Features may also vary from community to community. Please consult a Sales Manager for details. Options purchased must be specified in Exhibit B.

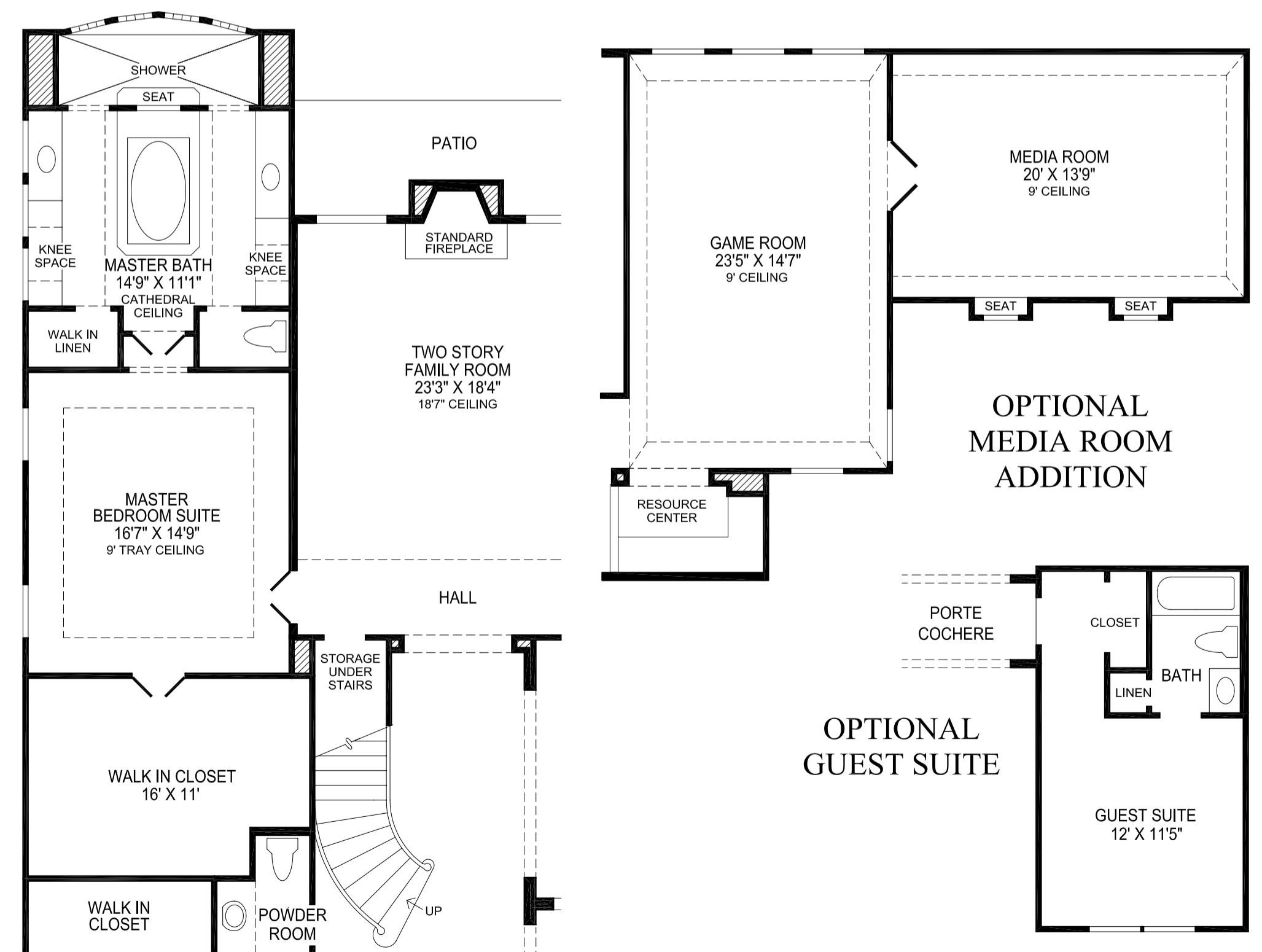
Toll Brothers
America's Luxury Home Builder™

tollbrothers.com

(MASTER) 0714 ©2005 TOLL BROTHERS, INC. (VENETIAN 702)



SECOND FLOOR



OPTIONAL MASTER BATH LUXURY PACKAGE

The floorplans and elevations of **Toll Brothers** homes are copyrighted. We have enforced and will continue to enforce our federal copyrights to protect the investment of our homebuyers.

This insert was produced using recycled products. ♻️